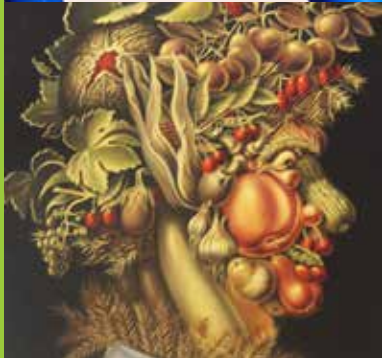


SHAKESPEARE GROVE
ARTIST STUDIOS

>
selected
works
2016



SHAKESPEARE GROVE ARTIST STUDIOS

> selected works 2016

OPENING: 6 pm - 8 pm THURSDAY 18 AUGUST

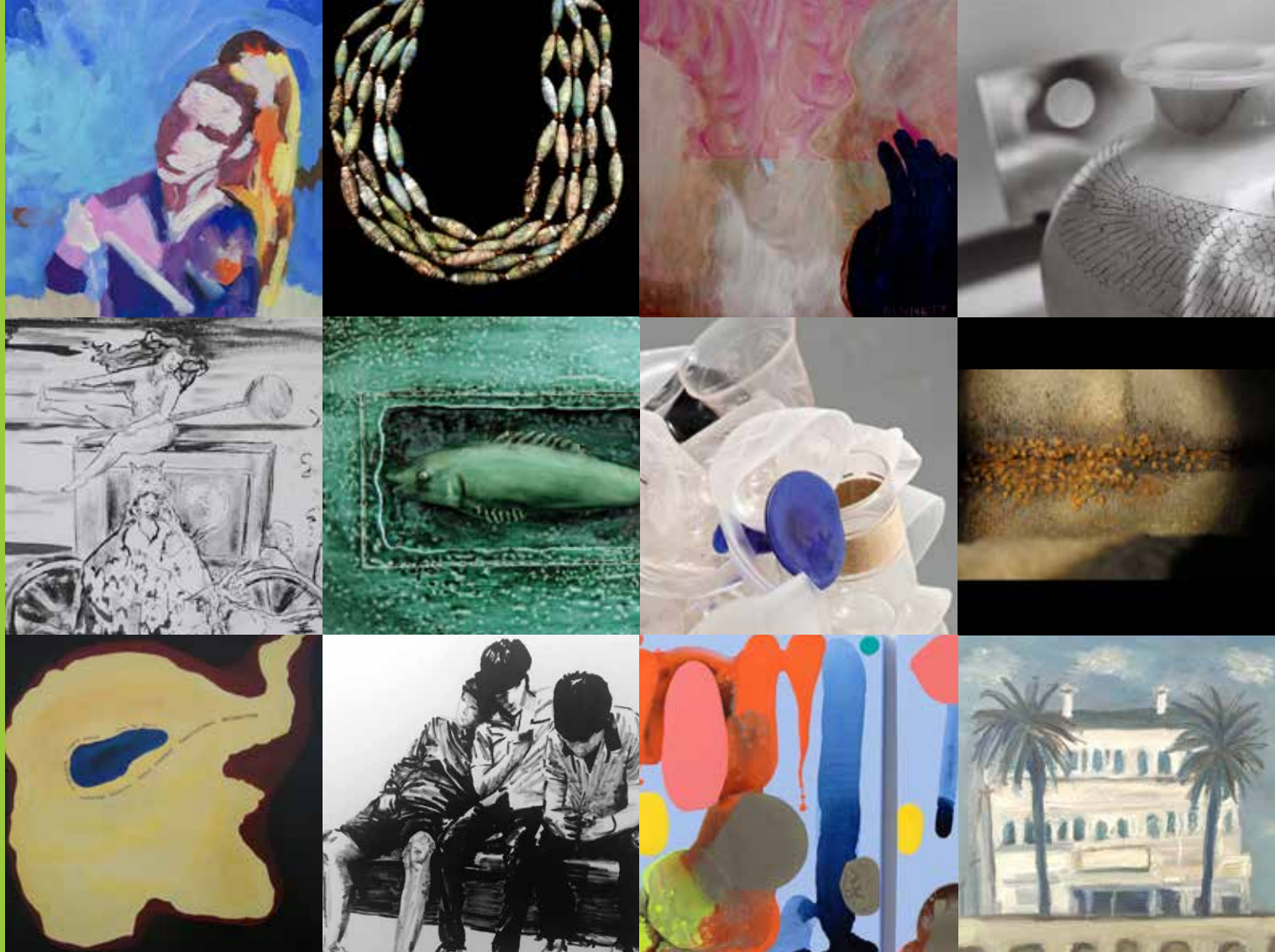
DATES: 17 AUGUST - 14 SEPTEMBER
MONDAY - FRIDAY, 8.30 am - 5 pm

LOCATION: THE GALLERY, ST KILDA TOWN HALL
99a CARLISLE STREET, ST KILDA

Shakespeare Grove Artist Studios are set within the tranquil environment of VegOut community gardens opposite Luna Park in the heart of St Kilda.

The studios are a Council managed arts space that provides professional and affordable workspaces for a wide range of visual art disciplines.

City of Port Phillip invite you to share in a selection of works from the SGAS artists currently in residence in the studios.



SHAKESPEARE GROVE ARTIST STUDIOS

contributing artists

**Andrea Baxter, Enza Benincasa, Ashlee Bennett,
Catrine Berlatier, Drasko Boljevic, Emma Hamilton,
Stephen Haley, Ricky Howell, Lorraine Heller-Nicholas,
Tamsin Green, Salvatori Lolicato, Rebecca Marshall,
Michael Murray, Dianne Peacock and Sally Rossiter**

enquiries

Arts Administrator, City of Port Phillip

Telephone: 9209 6217

www.port Phillip.vic.gov.au/art_spaces.htm

the Gallery

ST KILDA TOWN HALL

open day: Sunday 4 September, 10 am - 12 pm

To coincide with the current exhibition, some of the studios at Shakespeare Grove Artist Studios will be open to the public on Sunday 4 September 2016.

For more details please visit Shakespeare Grove Artist Studios website:

www.port Phillip.vic.gov.au/art_spaces.htm